

Figure 1 Long-term water color (black), growing degree days (red), discharge (blue) and S deposition (yellow) in lakes Fiolen , Skärshultsjön and Vombsjön. Points represent mean summer water color values for each year. For lake Vombsjön, precipitation data is presented due to the lack of long-term discharge data. LOESS smoothing was applied to all variables (span=0.375).

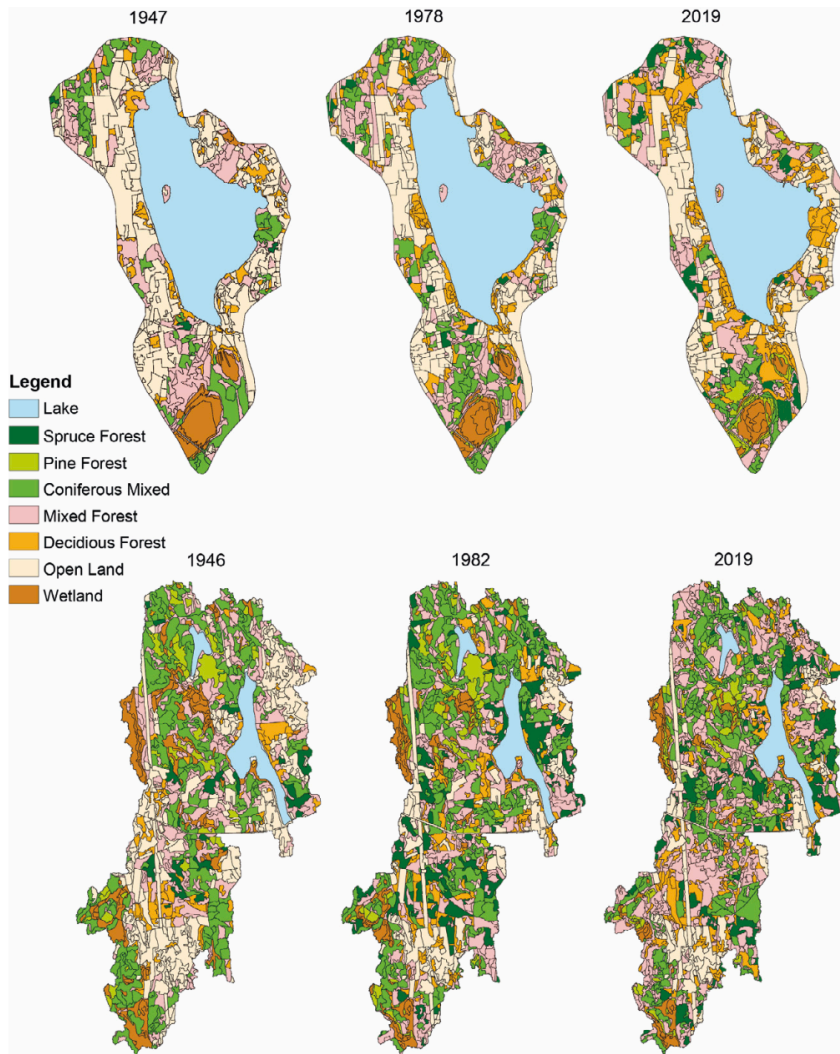


Figure 2 Catchment land cover during three time points for Lake Fiolen (top) and Lake Skärshultsjön (bottom).

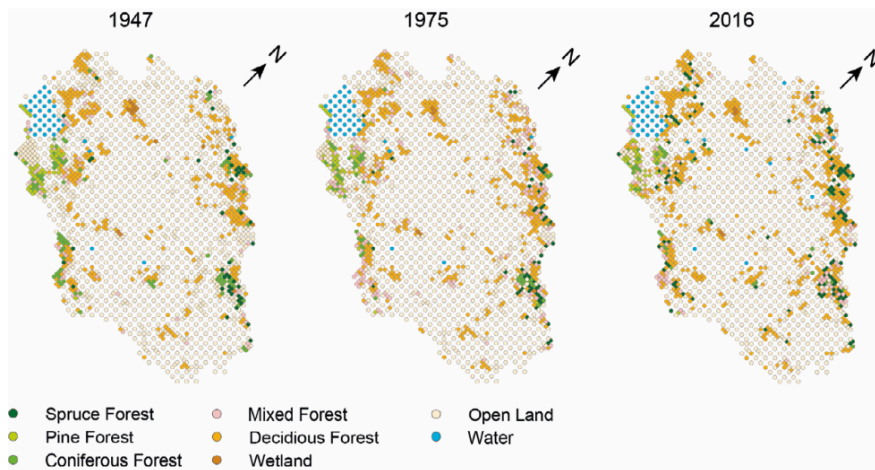


Figure 3 Catchment land cover during three time points for Lake Vombsjön. Due to the large catchment area, the catchment was sub-sampled with a point grid of 300 m in forested and 600 m in open areas. Lake Vombsjön is the large water body in the top-left corner of the catchment. Note that the catchment is rotated by 45° along the north-south axis.

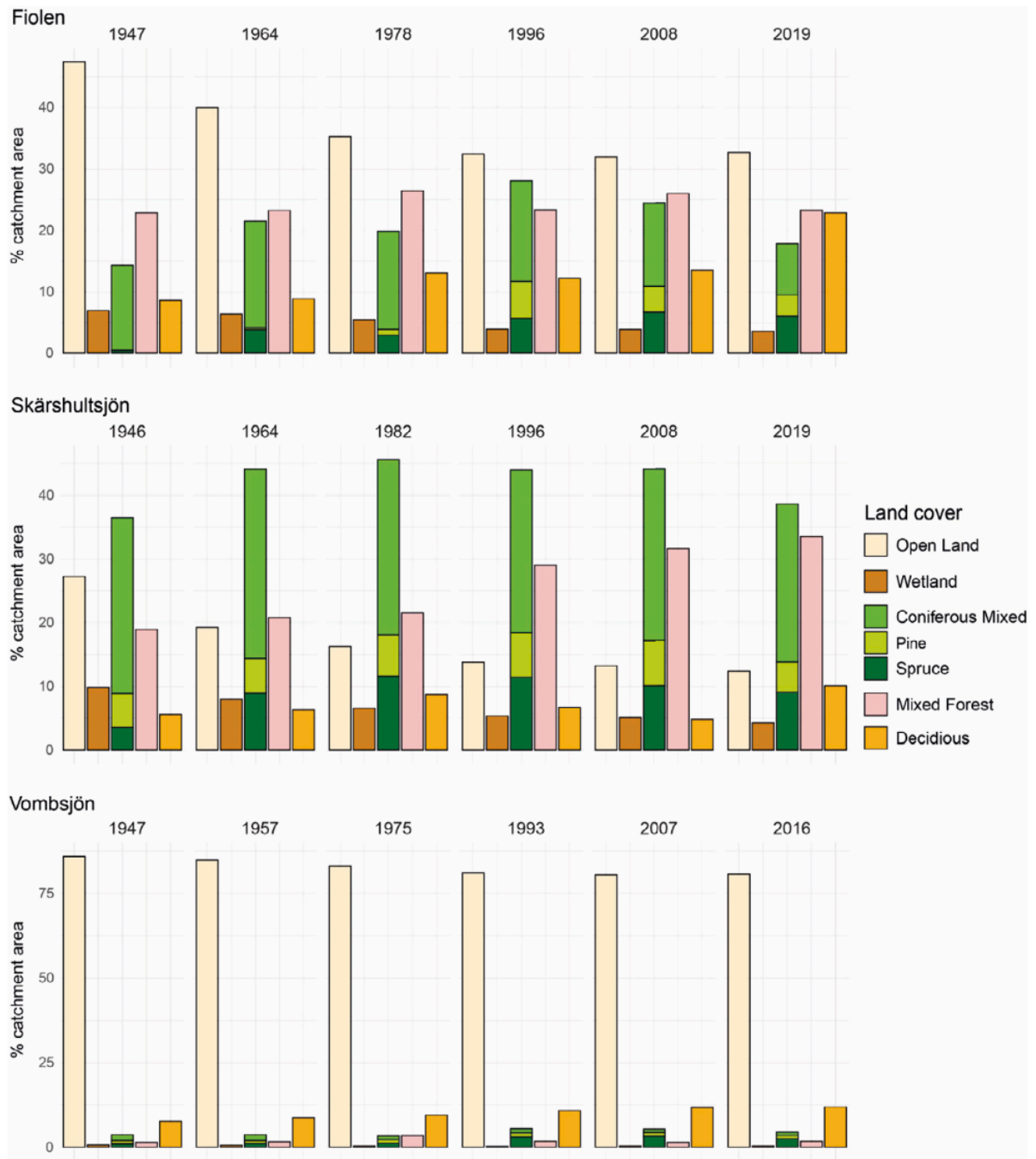


Figure 4 Catchment cover of Lake Fiolen, Lake Skärshultsjön and Lake Vombsjön at six time points. Time points differ for each lake, but represent roughly the same period.